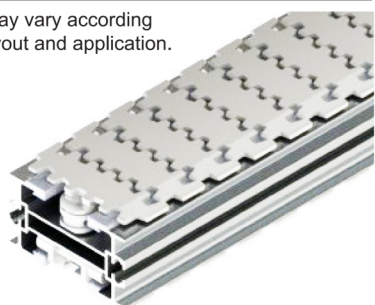


# MODU ML2 CONVEYOR SERIES

## Technical Characteristics

Chain Width	140 mm
Chain Pitch	44.5 mm
Chain Weight	2.5 kg/m
Chain Working Tension (Max)	
With Wheel Bend	1000 N
Without Wheel Bend	1200 N
Max Product Weight*	
Horizontal Transport	25.0 kg
Vertical Transport	15.0 kg
Total Load*	400 kg
Working Temperature*	-10°C to 60°C
Max Conveyor Length*	30 m
Max speed*	50 m/min
Drive Unit Capacity	1200 N
Item Width*	25 - 320 mm

\* Actual limit may vary according to conveyor layout and application.

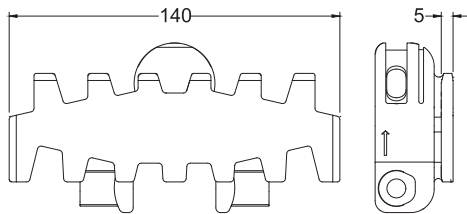


Chain Width 140mm

## Contents

Chain ML2 .....	86	Horizontal Wheel Bend ML2.....	95
Chain Top Replacement ML2 .....	88	Horizontal Plain Bend ML2.....	96
Chain Accessories ML2 .....	88	Vertical Bend ML2 .....	97
Drive Units ML2 .....	89	Chain Installation Section ML2.....	99
Idler End ML2 .....	93	Diagonal Beam ML2 .....	99
Conveyor Beam ML2.....	94		
Accessories ML2 .....	94		

### Chain ML2

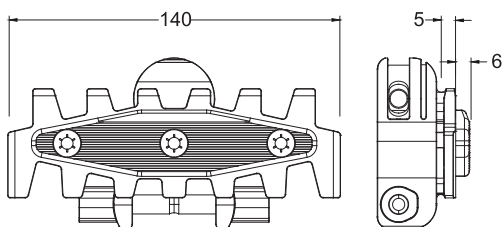


#### Plain Chain

- Suitable for conveyor configuration with incline/decline up to 7°.
- Accumulation possible.



Item Code	Material	Color	Weight	Supply
ML2 CP 5	POM	White	13.0 kg/roll	5m/roll
ML2 CP 5A	Anti-Static	Yellow	13.0 kg/roll	5m/roll
ML2 CP 5K	Kevlar	Yellow	15.6 kg/roll	5m/roll

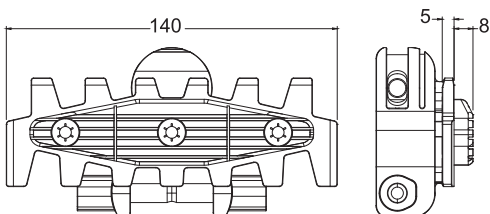


#### Friction Chain

- Suitable for conveyor configuration with incline/decline up to 25°.
- Friction material : TPE (grey).
- Accumulation not possible



Item Code	Material	Color	Weight	Supply
ML2 CF 5	POM	White	15.0 kg/roll	5m/roll
ML2 CF 5A	Anti-Static	Yellow	15.0 kg/roll	5m/roll
ML2 CF 5K	Kevlar	Yellow	17.0 kg/roll	5m/roll

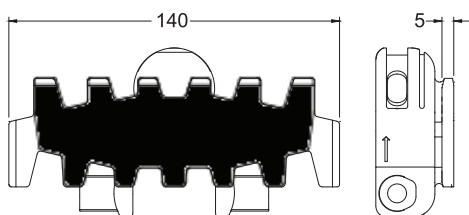


#### Silicone Pad Friction Chain

- High friction for incline of carton boxes up to 40°
- Accumulation not possible.
- Not suitable to use with Combined Drive

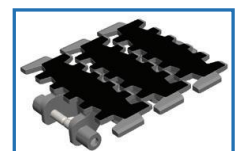


Item Code	Material	Color	Weight	Supply
ML2 CF 3S	POM	White	16.0 kg/roll	3m/roll
ML2 CF 3SA	Anti-Static	Yellow	16.0 kg/roll	3m/roll
ML2 CF 3SK	Kevlar	Yellow	17.0 kg/roll	3m/roll



#### Flocked Chain

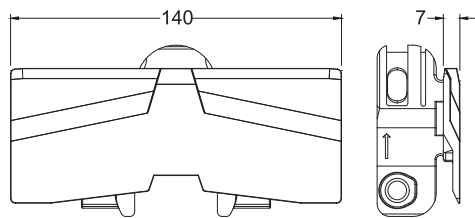
- Suitable for scratch sensitive material.
- Flock colour : Black
- Accumulation possible for light product only.
- Sticker type only



Item Code	Material	Color	Weight	Supply
ML2 CL 5	POM	White	12.5 kg/roll	5m/roll

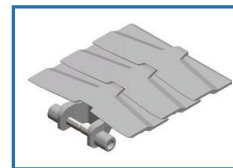
Please consult MODU representative for further information and assistance.

Units: Dimension (mm)

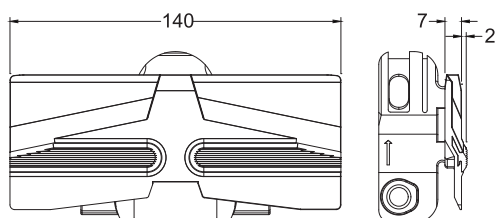


## Safety Chain

- Suitable for conveyor configuration with incline/decline up to 5°.
- Accumulation possible.

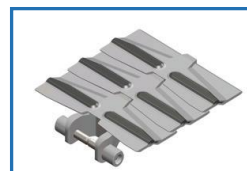


Item Code	Material	Color	Weight	Supply
ML2 CP 5S	POM	White	12.4 kg/roll	5m/roll

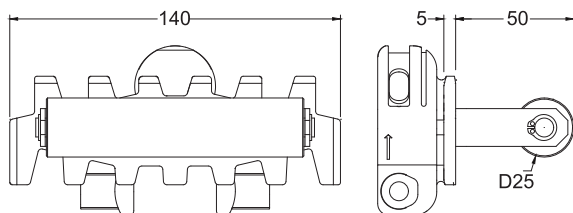


## Safety Friction Chain

- Suitable for conveyor configuration with incline/decline up to 25°.
- Friction material : TPE (grey).
- Accumulation not possible
- PP chain material working tension is less than POM, please refer to technical reference

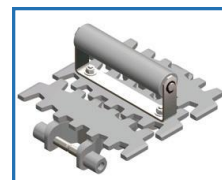


Item Code	Material	Color	Weight	Supply
ML2 CF 5S	PP	White	12.4 kg/roll	5m/roll



## Roller Cleated Link

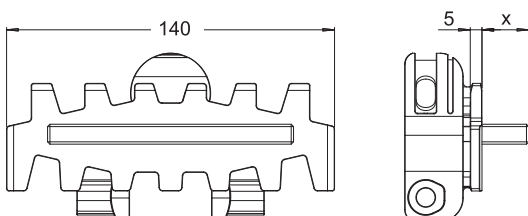
- Required for vertical or steeply inclined /declined conveyor.
- Accumulation not possible.
- Not suitable to be use with Combined and Catenary Drive.
- Supply in pieces.



\*P  
Please specify pitch between cleat for ordering  
(eg. ML2 CR 3 4P ; 4P = Every 4rd link to be cleated).

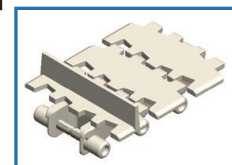
\* Non-standard height are available upon request.

Item Code	Material	Color	Weight	Supply
ML2 CR 3 *P	POM	White	** kg/pc	1 pc



## Machined Cleated Link

- Required for vertical or steeply inclined /declined conveyor.
- Accumulation not possible.
- Not suitable to be use with Combined and Catenary Drive.
- Supply in pieces.



\*P  
Please specify pitch between cleat for ordering  
(eg. ML2 CC 3x15 3P ; 3P = Every 3rd link to be cleated).

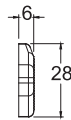
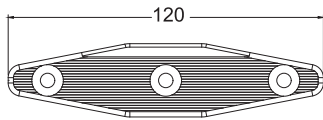
Item Code	Material	Color	Weight	Supply
ML2 CC 3X15 *P	POM	White	** kg/pc	1 pc
ML2 CC 3X15A *P	Anti-Static	Yellow	** kg/pc	1 pc
ML2 CC 3X15K *P	Kevlar	Yellow	** kg/pc	1 pc

Please consult MODU representative for further information and assistance.

Units: Dimension (mm)

## MODU ML2 SERIES - CHAIN

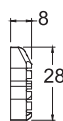
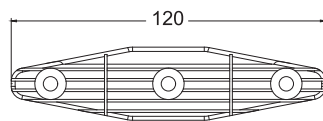
### Chain Top Replacement ML2



#### Friction Pad



Item Code	Material	Color	Weight	Supply
ML2 FP 140	TPE	Grey	0.01 kg	10 pcs/pkt



#### Friction Silicone Pad



Item Code	Material	Color	Weight	Supply
ML2 FP 140S	Silicone	Grey	0.5 kg	10 pcs/pkt

### Chain Accessories ML2

#### Lubricant For Chain



Silicone-based lubricant,  
400ml

Item Code	Weight	Supply
MA SL	0.35 kg/can	1 can

#### Stainless Steel Pin



Item Code	Weight	Supply
ML2 PN M8x73	0.07 kg	10 pcs / pkt

#### Chain Pivot



Item Code	Weight	Supply
ML2 PV	0.07 kg	10 pcs / pkt

#### Chain Pin Insertion Tool



Chain pin insertion tool  
shown without attachment  
and drive pin



Chain attachment and  
drive pin

Item Code	Description	Weight	Supply
TR CP 1	Pin Insertion Tool	1.2 kg	1 pc
ML2 AC	Chain Attachment	0.3 kg	1 pc

Please consult MODU representative for further information and assistance.

Units: Dimension (mm)



Drive Units ML2

Gearmotor size (SEW)  
S20 = WA20  
S30 = WA 30  
S37 = SA37  
S47 = SA47

Gearmotor type (Transtechno)  
T40 = CMRV 040  
T50 = CMRV 050

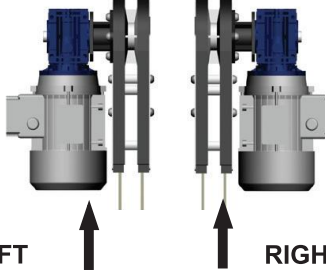
Transfer Device  
NIL = Basic Unit  
TR = Free Roller  
DR = Driven Roller

Clutch  
NIL = Basic Unit  
C = With Clutch

Gearmotor position: L or R

D: Front Drive  
T: Combined Drive  
S: Suspended Drive  
I: Intermediate Drive

**Motor Orientation Guideline**



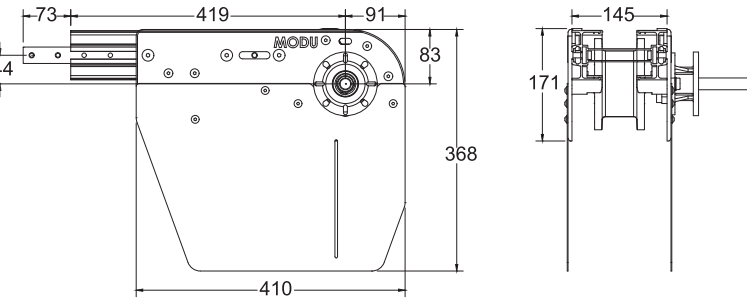
LEFT      RIGHT

**ML2 DD L S37 TR C**

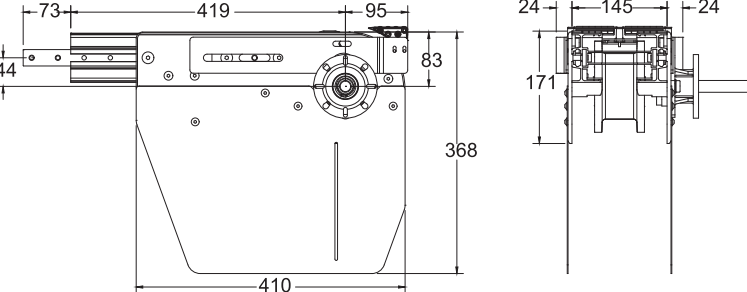
Front direct drive unit, motor on left side for 0.55kW SEW geared motor, with Free Roller and Clutch.

Front Drive Unit

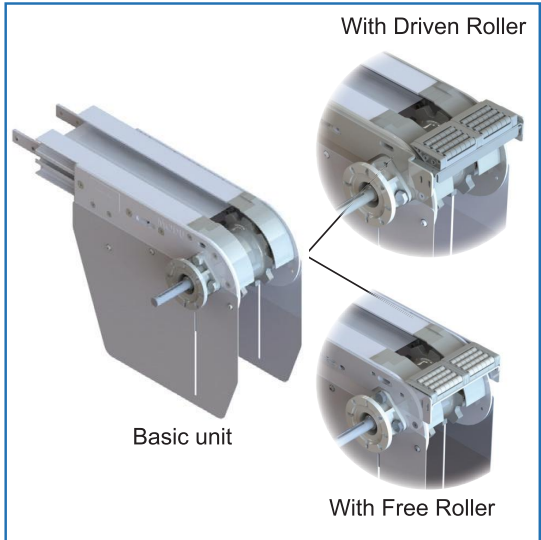
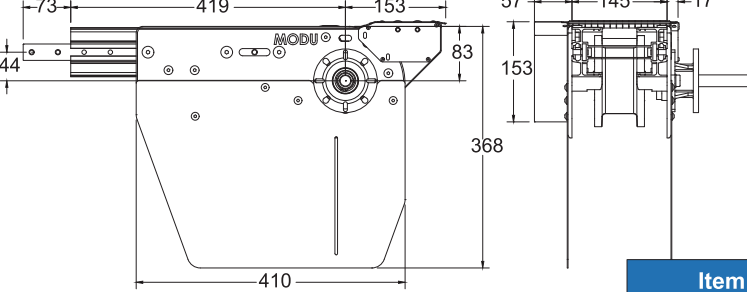
Basic Front Drive



Front Drive with Free Roller



Front Drive with Driven Roller



\*\*Comes without safety cover

- Effective track length: 1.16m
  - Traction force: 1200N
  - Connecting strip and set screw included.
- Note:
- Safety Cover comes as an option.
  - Recommended maximum chain elongation is 328mm from top conveyor to chain slack.

Driven Roller speed is approximately 10% higher than conveyor speed.

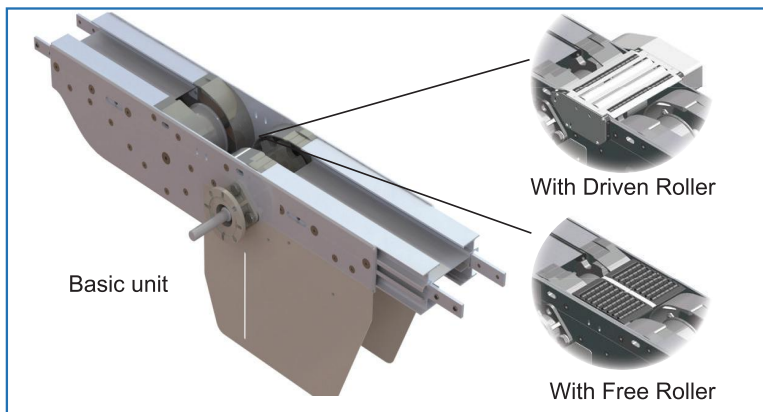
Item Code	Description	Weight	Supply
ML2 DD R/L S/T	Basic drive unit	6.3 kg	1 unit
ML2 DD R/L S/T TR	With transfer roller	6.8 kg	1 unit
ML2 DD R/L S/T DR	With driven roller	8.3 kg	1 unit

Please consult MODU representative for further information and assistance. Units: Dimension (mm)

AP
TR
MP
MS3
MM3
<b>ML2</b>
MX2
MT2
MR2
MF2
MPP
MM3P
ML2P
MDP
MG
MB
MA
DS3
DM3
DL2
DX2
DT2
DR2
DF2
DG
DB
DA
SD
SE
TL
IM
MM

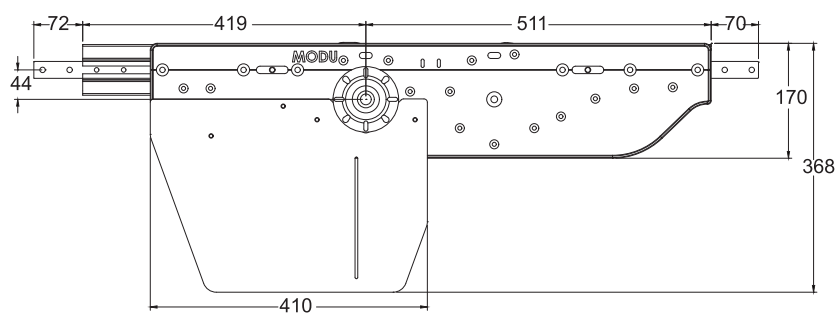
## MODU ML2 SERIES - DRIVE UNITS

### Combined Drive Unit

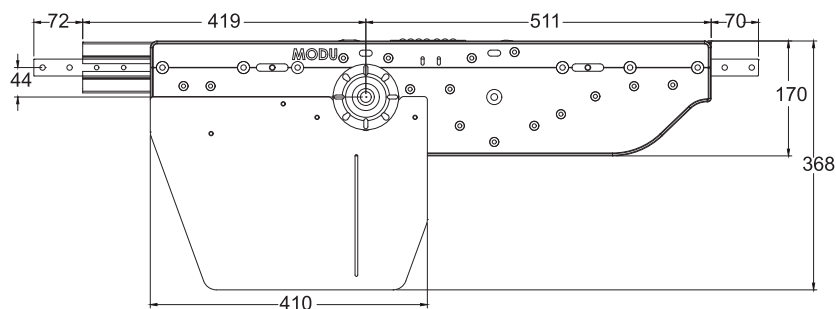


\*\*Comes without safety cover

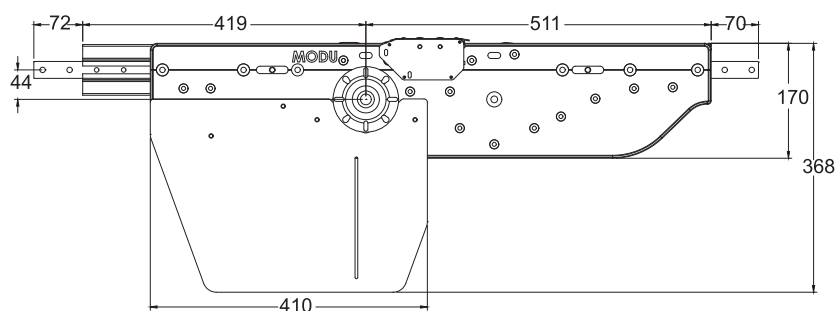
#### Basic Combined Drive



#### Combined Drive with Free Roller



#### Combined Drive with Driven Roller



Driven Roller speed is approximately 10% higher than conveyor speed.

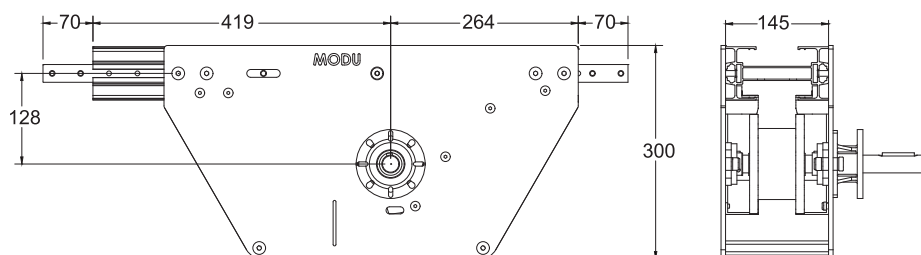
Item Code	Description	Weight	Supply
ML2 DT R/L S/T	Basic drive unit	12.0 kg	1 unit
ML2 DT R/L S/T TR	With transfer roller	12.0 kg	1 unit
ML2 DT R/L S/T DR	With driven roller	13.8 kg	1 unit

- Effective track length: 2.19m
  - Traction force: 1200N
  - Connecting strip and set screw included.
- Note:
- Safety Cover comes as an option.
  - Recommended maximum chain elongation is 328mm from top conveyor to chain slack.

Please consult MODU representative for further information and assistance.

Units: Dimension (mm)

## Intermediate Drive Unit

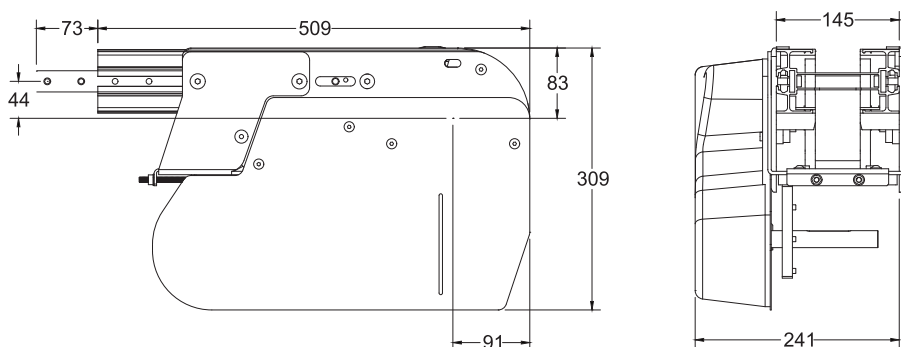


- Effective track length: 1.49m
- Traction force: 300N
- Horizontal use only
- Connecting strip and set screw included.

Item Code	Weight	Supply
ML2 DI R/L S/T	14.0 kg	1 unit

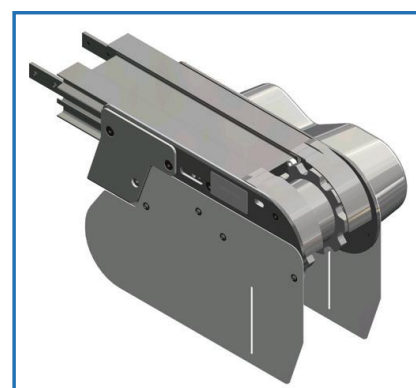


## Suspended Drive Unit



- Effective track length: 1.16m
- Traction force: 1200N
- Connecting strip and set screw included.

Item Code	Description	Weight	Supply
ML2 DS R/L S/T	Without clutch	14.5 kg	1 unit
ML2 DS R/L S/T C	With clutch	15.5 kg	1 unit

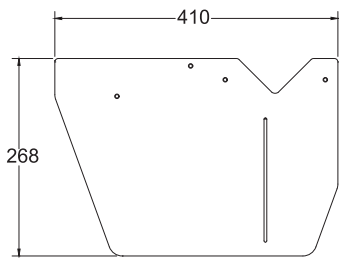


Please consult MODU representative for further information and assistance.

Units: Dimension (mm)

## MODU ML2 SERIES - DRIVE UNITS

### Standard Safety Cover

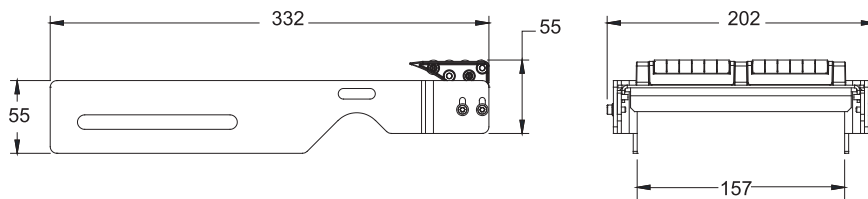


- Material : Stainless Steel
- Suitable to be used with front drive unit and combined drive unit

Item Code	Weight	Supply
SC2 268	1.8 kg	2 pcs/set

### Free Transfer Roller

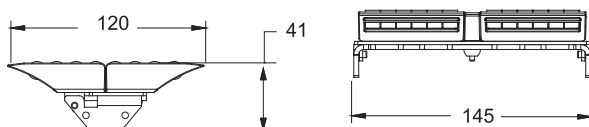
#### Direct Drive Unit



Item Code	Weight	Supply
ML2 TR DD/IE	0.86 kg	1 unit



#### Combined Drive Unit



Item Code	Weight	Supply
ML2 TR DT	0.42 kg	1 unit



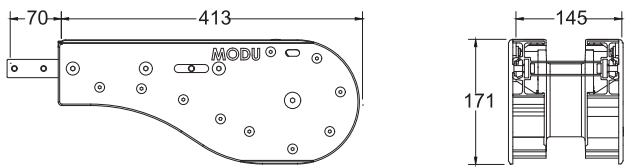
Please consult MODU representative for further information and assistance.

Units: Dimension (mm)

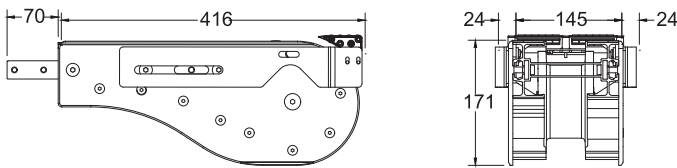


Idler End ML2

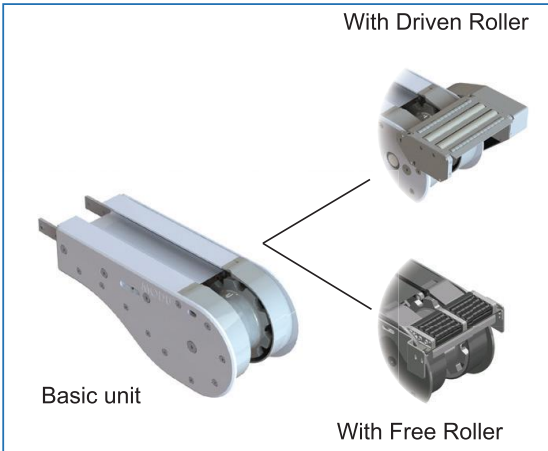
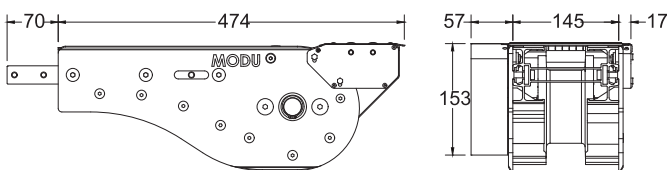
Basic Idler End Unit



Idler End Unit with Free Roller



Idler End Unit with Driven Roller



Driven Roller speed is approximately 10% higher than conveyor speed.

- Effective track length: 1.02m
- Connecting strip and set screw included.

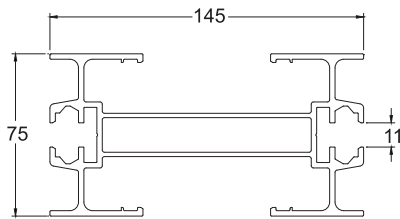
Item Code	Description	Weight	Supply
ML2 IE 400	Basic idler unit	4.1 kg	1 unit
ML2 IE 400 TR	With transfer roller	4.4 kg	1 unit
ML2 IE 400 DR L/R	With driven roller	5.9 kg	1 unit

Please consult MODU representative for further information and assistance.

Units: Dimension (mm)

## MODU ML2 SERIES - BEAM AND ACCESSORIES

### Conveyor Beam ML2

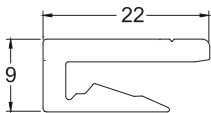


Item Code	Weight	Supply
ML2 CB 3	12.9 kg	3m / beam



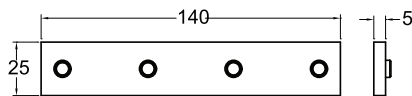
### Accessories ML2

#### Slide Rail



Item Code	Material	Color	Weight	Supply
MA2 SR 25	HDPE	Semi-Transparent White	2.8 kg	25m/roll
MA2 SR 25A	Anti-Static	Grey	2.8 kg	25m/roll
MA2 SR 25U	UHMW-PE	-	-	-

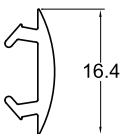
#### Connecting Strip



- 4 pcs M8 set screw included.

Item Code	Weight	Supply
MA CS 25x140	1.1 kg	10 pcs/pkt

#### T-Slot Cover



Item Code	Material	Color	Weight	Supply
MB SC 25T	TPE	Grey	1.5 kg	25m/roll
MB SC 25P	PVC	Light Grey	1.3 kg	25m/roll

#### Screw



Item Code	Weight	Supply
MA RS 6.5	0.02 kg	50 pcs/pkt

#### Slide Rail Mounting Tool



Item Code	Weight	Supply
ML2 SRA	0.4 kg	1 pc

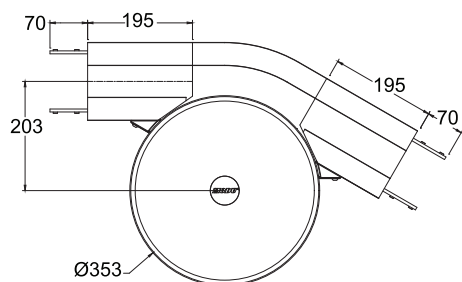
\*\*ML2 & MX2 uses the same mounting tool

Please consult MODU representative for further information and assistance.

Units: Dimension (mm)

## MODU ML2 SERIES - HORIZONTAL WHEEL BEND

### Horizontal Wheel Bend ML2



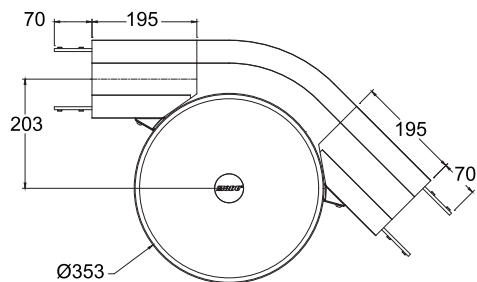
#### Wheel Bend, 30°

Effective track length:

0.6m 1-way (1.2m 2-way)

- Tolerance:  $\pm 2^\circ$  & Radius:  $\pm 10\text{mm}$
- Connecting strip and set screw included.

Item Code	Weight	Supply
ML2 BW 30R200	6.8 kg	1 unit



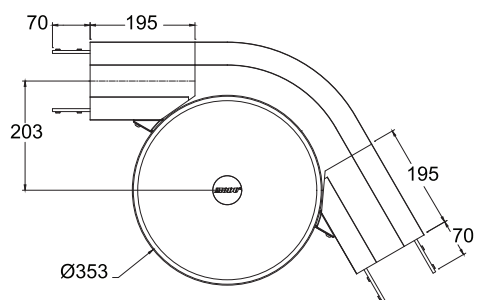
#### Wheel Bend, 45°

Effective track length:

0.66m 1-way (1.32m 2-way)

- Tolerance:  $\pm 2^\circ$  & Radius:  $\pm 10\text{mm}$
- Connecting strip and set screw included.

Item Code	Weight	Supply
ML2 BW 45R200	6.9 kg	1 unit



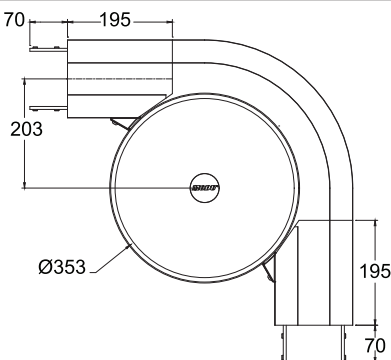
#### Wheel Bend, 60°

Effective track length:

0.71m 1-way (1.42m 2-way)

- Tolerance:  $\pm 2^\circ$  & Radius:  $\pm 10\text{mm}$
- Connecting strip and set screw included.

Item Code	Weight	Supply
ML2 BW 60R200	7.0 kg	1 unit



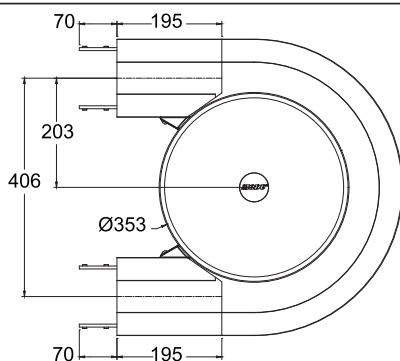
#### Wheel Bend, 90°

Effective track length:

0.81m 1-way (1.62m 2-way)

- Tolerance:  $\pm 2^\circ$  & Radius:  $\pm 10\text{mm}$
- Connecting strip and set screw included.

Item Code	Weight	Supply
ML2 BW 90R200	7.2 kg	1 unit



#### Wheel Bend, 180°

Effective track length:

1.13m 1-way (2.26m 2-way)

- Tolerance:  $\pm 2^\circ$  & Radius:  $\pm 10\text{mm}$
- Connecting strip and set screw included.

Item Code	Weight	Supply
ML2 BW 180R200	8.2 kg	1 unit

Please consult MODU representative for further information and assistance.

Units: Dimension (mm)

## MODU ML2 SERIES - HORIZONTAL PLAIN BEND

### Horizontal Plain Bend ML2

Plain bends comes with options for optimum usage

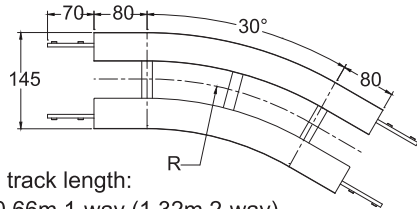
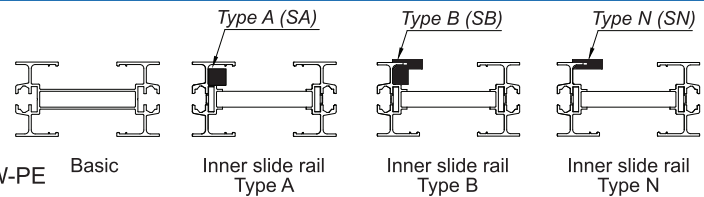
-Plain bend basic unit.

-Plain bend with inner slide rail Type A (SA), Material = PE.

-Plain bend with inner slide rail Type B (SB), Material = Nylon

-Plain bend with inner slide rail Type N (SN), Material = UHMW-PE

\*(SB) is recommended when conveyor speed is 30m/min and above



Effective track length:

R500: 0.66m 1-way (1.32m 2-way)

R700: 0.77m 1-way (1.54m 2-way)

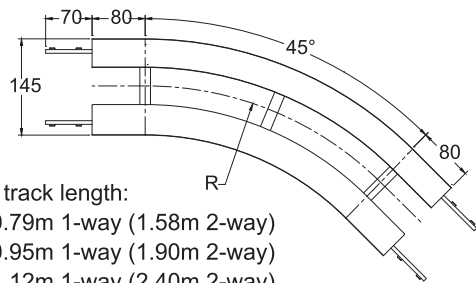
R1000: 0.92m 1-way (1.84m 2-way).

#### Horizontal Plain Bend, 30°

Item Code	Radius (R)	Weight	Supply
ML2 BP 30R500	500 mm	2.8 kg	1 unit
ML2 BP 30R700	700 mm	3.3 kg	1 unit
ML2 BP 30R1000	1000 mm	3.6 kg	1 unit

Tolerance:  $\pm 2^\circ$  & Radius:  $\pm 10$ mm

- Connecting strip and set screw included.



Effective track length:

R500: 0.79m 1-way (1.58m 2-way)

R700: 0.95m 1-way (1.90m 2-way)

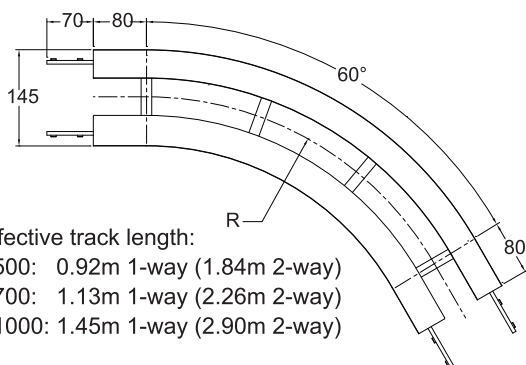
R1000: 1.12m 1-way (2.40m 2-way)

#### Horizontal Plain Bend, 45°

Item Code	Radius (R)	Weight	Supply
ML2 BP 45R500	500 mm	3.4 kg	1 unit
ML2 BP 45R700	700 mm	4.1 kg	1 unit
ML2 BP 45R1000	1000 mm	5.1 kg	1 unit

Tolerance:  $\pm 2^\circ$  & Radius:  $\pm 10$ mm

- Connecting strip and set screw included.



Effective track length:

R500: 0.92m 1-way (1.84m 2-way)

R700: 1.13m 1-way (2.26m 2-way)

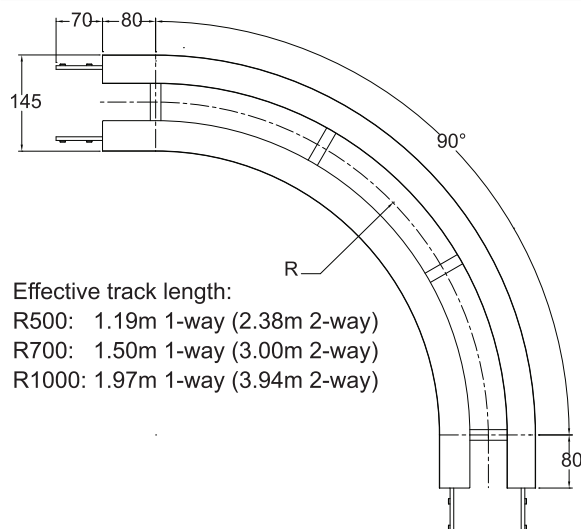
R1000: 1.45m 1-way (2.90m 2-way)

#### Horizontal Plain Bend, 60°

Item Code	Radius (R)	Weight	Supply
ML2 BP 60R500	500 mm	3.9 kg	1 unit
ML2 BP 60R700	700 mm	4.1 kg	1 unit
ML2 BP 60R1000	1000 mm	6.2 kg	1 unit

Tolerance:  $\pm 2^\circ$  & Radius:  $\pm 10$ mm

- Connecting strip and set screw included.



Effective track length:

R500: 1.19m 1-way (2.38m 2-way)

R700: 1.50m 1-way (3.00m 2-way)

R1000: 1.97m 1-way (3.94m 2-way)

#### Horizontal Plain Bend, 90°

Item Code	Radius (R)	Weight	Supply
ML2 BP 90R500	500 mm	5.1 kg	1 unit
ML2 BP 90R700	700 mm	6.4 kg	1 unit
ML2 BP 90R1000	1000 mm	8.4 kg	1 unit

Tolerance:  $\pm 2^\circ$  & Radius:  $\pm 10$ mm

- Connecting strip and set screw included.

When ordering plain bends with inner slide rail, please specify the type using the following part number as an example.

Type A - ML2 BP 30R500 SA

Type B - ML2 BP 90R500 SB

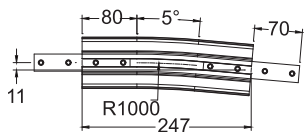
Type N - ML2 BP 90R500 SN

Please consult MODU representative for further information and assistance.

Units: Dimension (mm)

## MODU ML2 SERIES - VERTICAL BEND

### Vertical Bend ML2



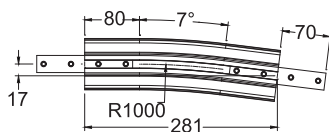
#### Vertical Bend, 5°

Effective track length:

R1000: 0.25m 1-way (0.5m 2-way)

- Tolerance:  $\pm 2^\circ$  & Radius:  $\pm 10\text{mm}$
- Connecting strip and set screw included.

Item Code	Weight	Supply
ML2 BV 5R1000	1.6 kg	1 unit



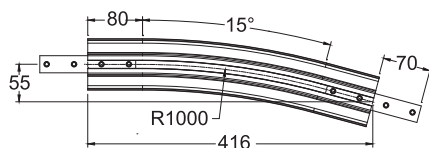
#### Vertical Bend, 7°

Effective track length:

R1000: 0.28m 1-way (0.56m 2-way)

- Tolerance:  $\pm 2^\circ$  & Radius:  $\pm 10\text{mm}$
- Connecting strip and set screw included.

Item Code	Weight	Supply
ML2 BV 7R1000	1.8 kg	1 unit



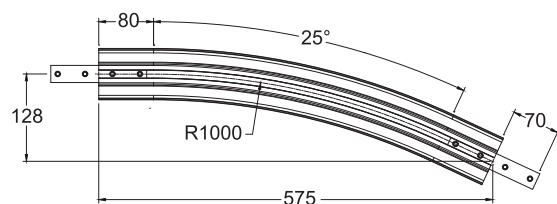
#### Vertical Bend, 15°

Effective track length:

R1000: 0.42m 1-way (0.84m 2-way)

- Tolerance:  $\pm 2^\circ$  & Radius:  $\pm 10\text{mm}$
- Connecting strip and set screw included.

Item Code	Weight	Supply
ML2 BV 15R1000	2.4 kg	1 unit



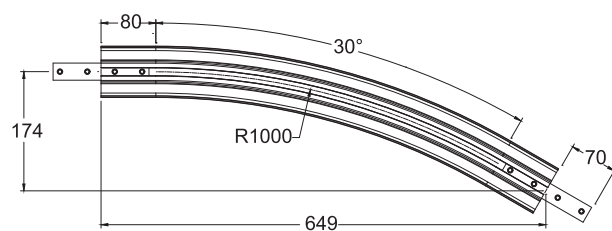
#### Vertical Bend, 25°

Effective track length:

R1000: 0.60m 1-way (1.20m 2-way)

- Tolerance:  $\pm 2^\circ$  & Radius:  $\pm 10\text{mm}$
- Connecting strip and set screw included.

Item Code	Weight	Supply
ML2 BV 25R1000	3.2 kg	1 unit



#### Vertical Bend, 30°

Effective track length:

R1000: 0.68m 1-way (1.36m 2-way)

- Tolerance:  $\pm 2^\circ$  & Radius:  $\pm 10\text{mm}$
- Connecting strip and set screw included.

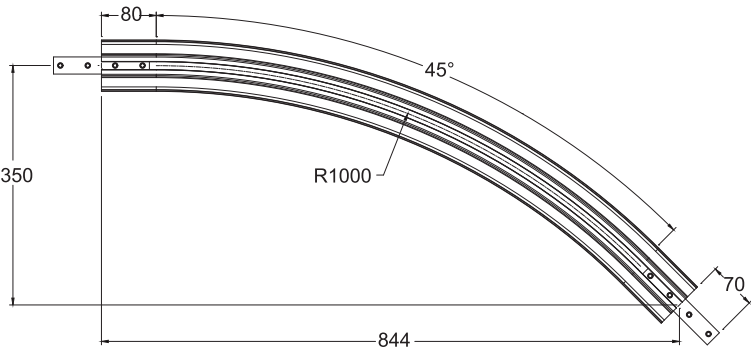
Item Code	Weight	Supply
ML2 BV 30R1000	3.5 kg	1 unit

Please consult MODU representative for further information and assistance.

Units: Dimension (mm)



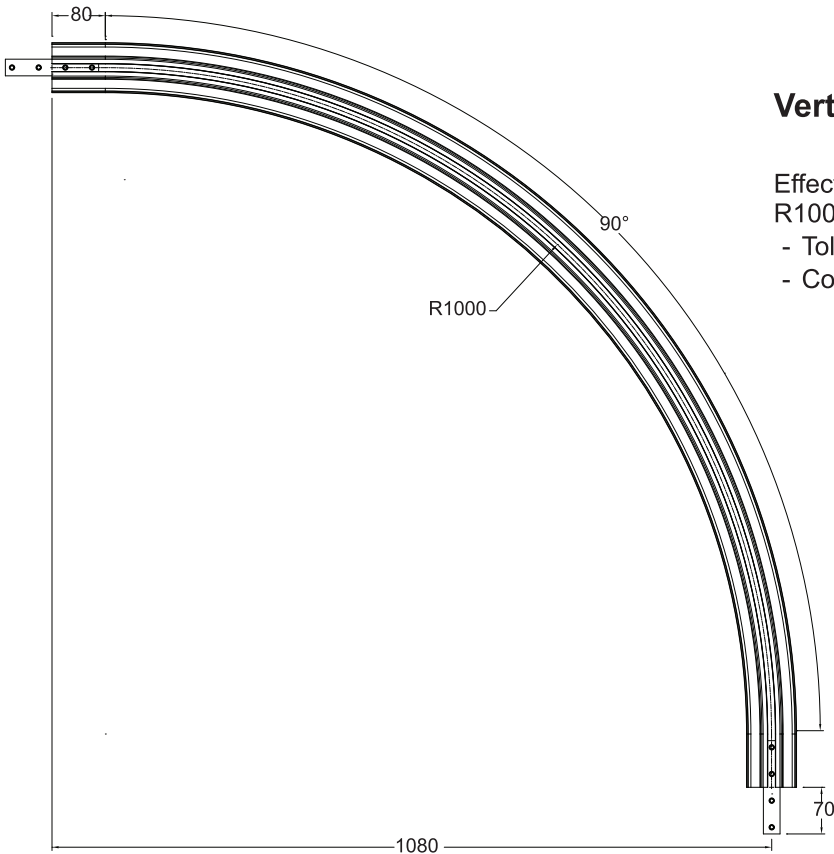
MODU ML2 SERIES - VERTICAL BEND



Vertical Bend, 45°

Effective track length:  
R1000: 0.95m 1-way (1.90m 2-way)  
- Tolerance:  $\pm 2^\circ$  & Radius:  $\pm 10\text{mm}$   
- Connecting strip and set screw included.

Item Code	Weight	Supply
ML2 BV 45R1000	4.5 kg	1 unit



Vertical Bend, 90°

Effective track length:  
R1000: 1.73m 1-way (3.46m 2-way)  
- Tolerance:  $\pm 2^\circ$  & Radius:  $\pm 10\text{mm}$   
- Connecting strip and set screw included.

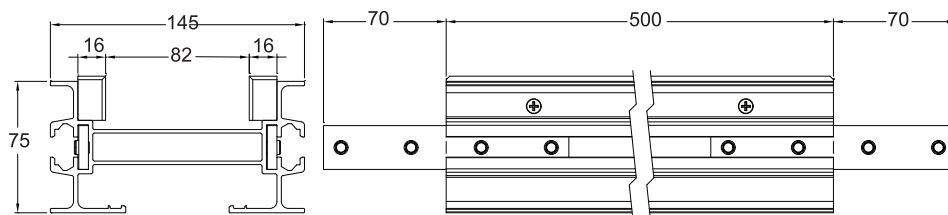
Item Code	Weight	Supply
ML2 BV 90R1000	7.9 kg	1 unit

Please consult MODU representative for further information and assistance.

Units: Dimension (mm)

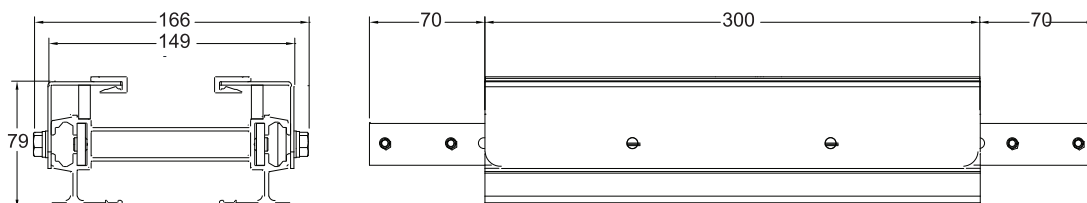
## MODU ML2 SERIES - COMPONENTS

### Chain Installation Section ML2



- Connecting strip and set screw included.

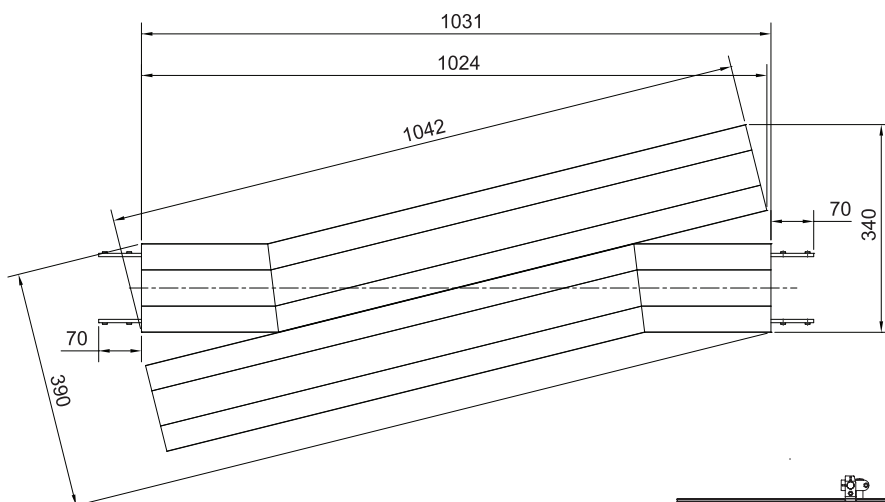
Item Code	Weight	Supply
ML2 LU 500	2.2 kg	1 unit



Item Code	Weight	Supply
ML2 CIS 300	2.0 kg	1 unit

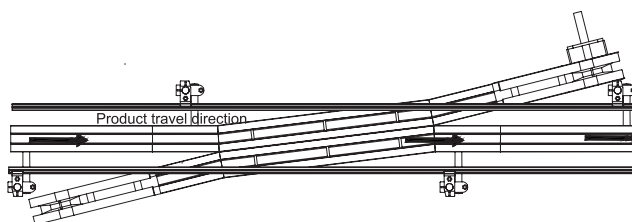
\*\*Stainless steel side plate available on request

### Diagonal Beam ML2



- A combination drive and idler unit used for smooth transferring of unstable products between conveyors.
- All available standard drives fit this unit.
- Please indicate the drive unit type when placing an order.

Item Code	Weight	Supply
ML2 BXD	26.3 kg	1 unit



Please consult MODU representative for further information and assistance.

Units: Dimension (mm)